



MO-SCI Specialty Products, L.L.C.

A Subsidiary of MO-SCI Corporation

4040 HyPoint North

Rolla, MO 65401

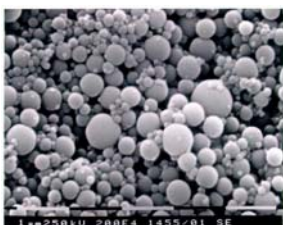
Telephone: 573-364-2338

Fax: 573-364-9589

GL-0201 DATA SHEET

Appearance

Solid clear amorphous silica microspheres with white color in powder form.



Chemical Composition (by weight)

Silica (SiO ₂)	99.5-99.9%
Aluminum oxide (Al ₂ O ₃)	40-60 ppm
Iron oxide (Fe ₂ O ₃)	15-25 ppm
Sodium oxide (Na ₂ O)	2-10 ppm

Physical Properties

Specific Gravity	2.2 (g/ cm ³)
pH in water @ 25°C	7.0
Softening Temperature	1100°C
Index of Refraction	1.46(n _D)
Coefficient of Thermal Expansion...	6 x 10 ⁻⁷ /°C (30-300° C)

Size Availability

Size* in
Micron (μm) _____
1-60μm
>90% within size range

Applications

Typical applications of GL0201 beads including: calibration, high temperature spacer material for gauge control, coating, filler for plastics, etc.